



MILES ESTATE AGENTS

41A Mount Street Bishops Lydeard
Taunton TA4 3LH £295,000



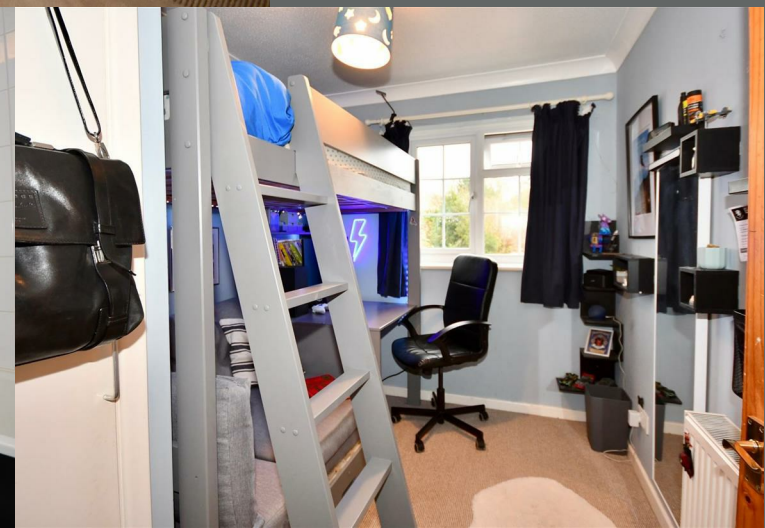
A beautifully presented and environmentally friendly 3 bed end terrace house with the best EPC rating we have ever encountered (call for more details!), nestled in the heart of this lovely Quantock village with its extensive amenities. Refitted kitchen and bathroom, larger than average garden, lots of off road parking and single garage. Early viewing highly recommended. Freehold Council Tax Band C EPC : A





Features:

- Entrance hall
- Spacious sitting/dining room with woodburning stove
- Refitted kitchen with large pantry
- Cloakroom
- 3 good size bedrooms
- Refitted family bathroom
- Enclosed garden
- Lots of off road parking with EV charging point
- Single garage
- Superb A rated EPC
- Freehold
- Council Tax Band C



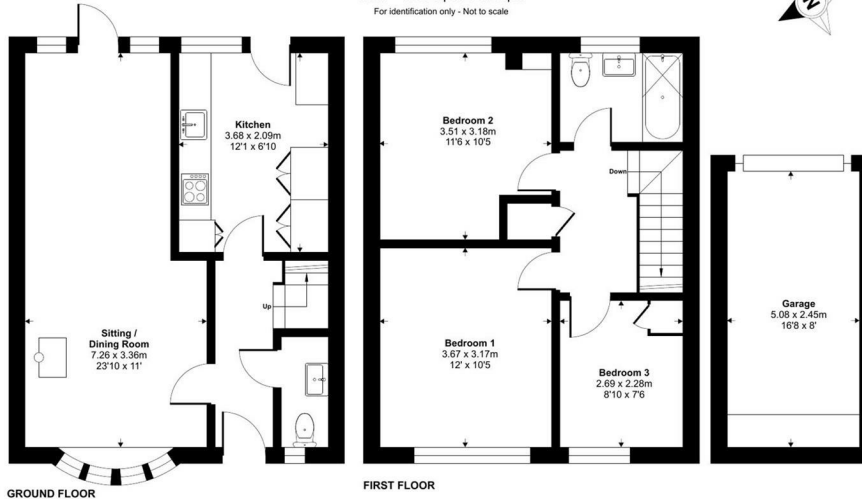
Mount Street, Bishops Lydeard, Taunton, TA4

Approximate Area = 882 sq ft / 81.9 sq m

Garage = 134 sq ft / 12.4 sq m

Total = 1016 sq ft / 94.3 sq m

For identification only - Not to scale



GROUND FLOOR

FIRST FLOOR

Floor plan produced in accordance with RICS Property Measurement 2nd Edition, incorporating International Property Measurement Standards (IPMS2 Residential). © nrichcom 2025. Produced for Miles Alexander Limited T/A Miles Estate Agents. REF: 1386940

Energy Efficiency Rating		
	Current	Potential
Very energy efficient - lower running costs		
(92 plus) A	100	100
(81-91) B		
(69-80) C		
(55-68) D		
(39-54) E		
(21-38) F		
(1-20) G		
Not energy efficient - higher running costs		
England & Wales		
	EU Directive 2002/91/EC	



Viewings strictly through the selling agents:

Miles Estate Agents

2 Piffin Lane, Bishops Lydeard, Taunton,
Somerset, TA4 3AS

Tel: 01823 470 500

lydeard@milesestateagents.co.uk

www.milesestateagents.co.uk

rightmove

OnTheMarket.com

MILES ESTATE AGENTS



BEST

ESTATE AGENT GUIDE
2019 : EXCEPTIONAL

SALES